



New Hampshire Center  
for Public Policy Studies

### Board of Directors

William H. Dunlap, Chair

David Alukonis

Eric Herr

Dianne Mercier

James Putnam

Todd I. Selig

Michael Whitney

Daniel Wolf

Martin L. Gross, *Chair  
Emeritus*

#### *Directors Emeritus*

Sheila T. Francoeur

Stuart V. Smith, Jr.

Donna Sytek

Brian F. Walsh

Kimon S. Zachos

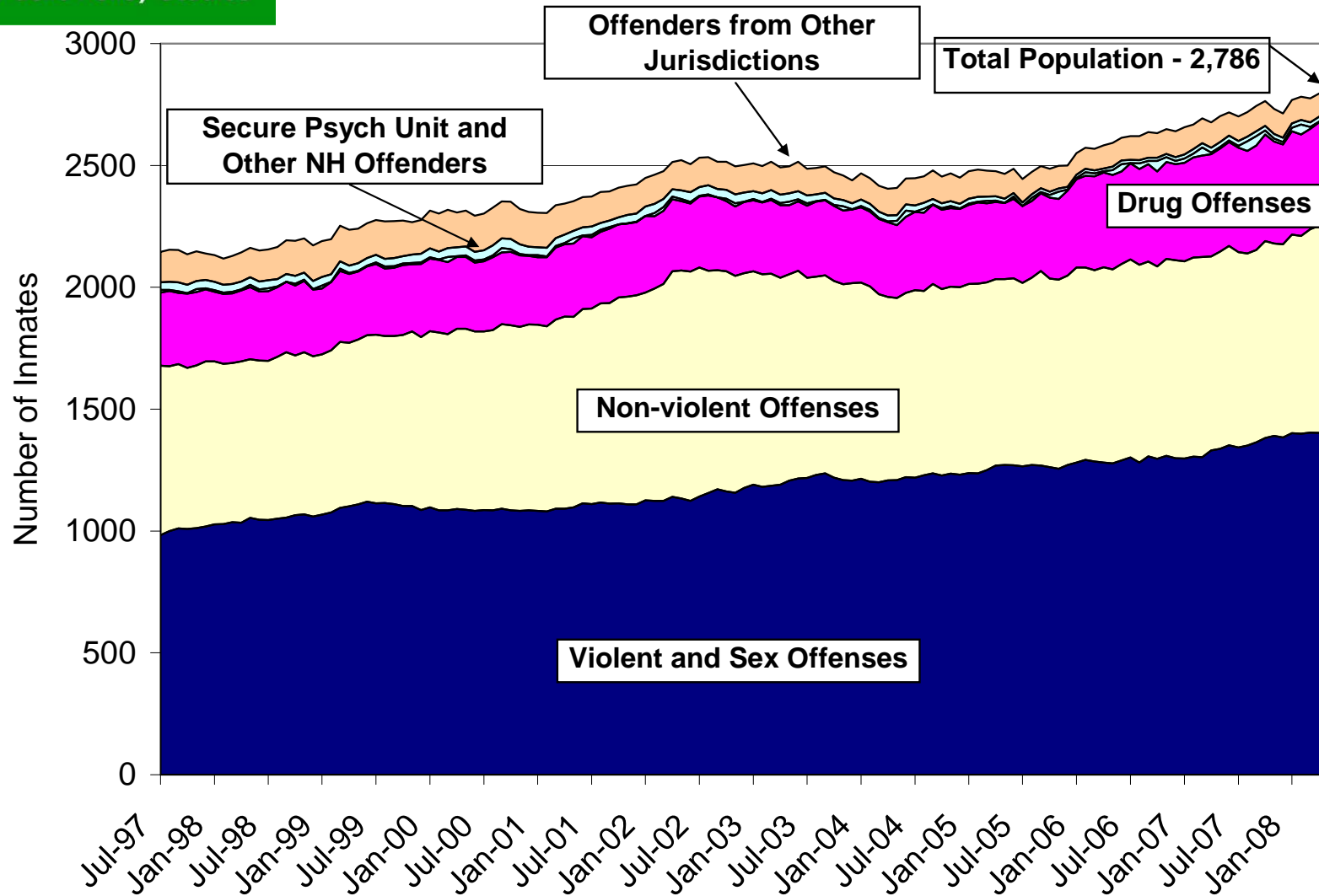
# NH Corrections and Crime, Post SB500

Interbranch Criminal and Juvenile Justice  
Council

September 24, 2014

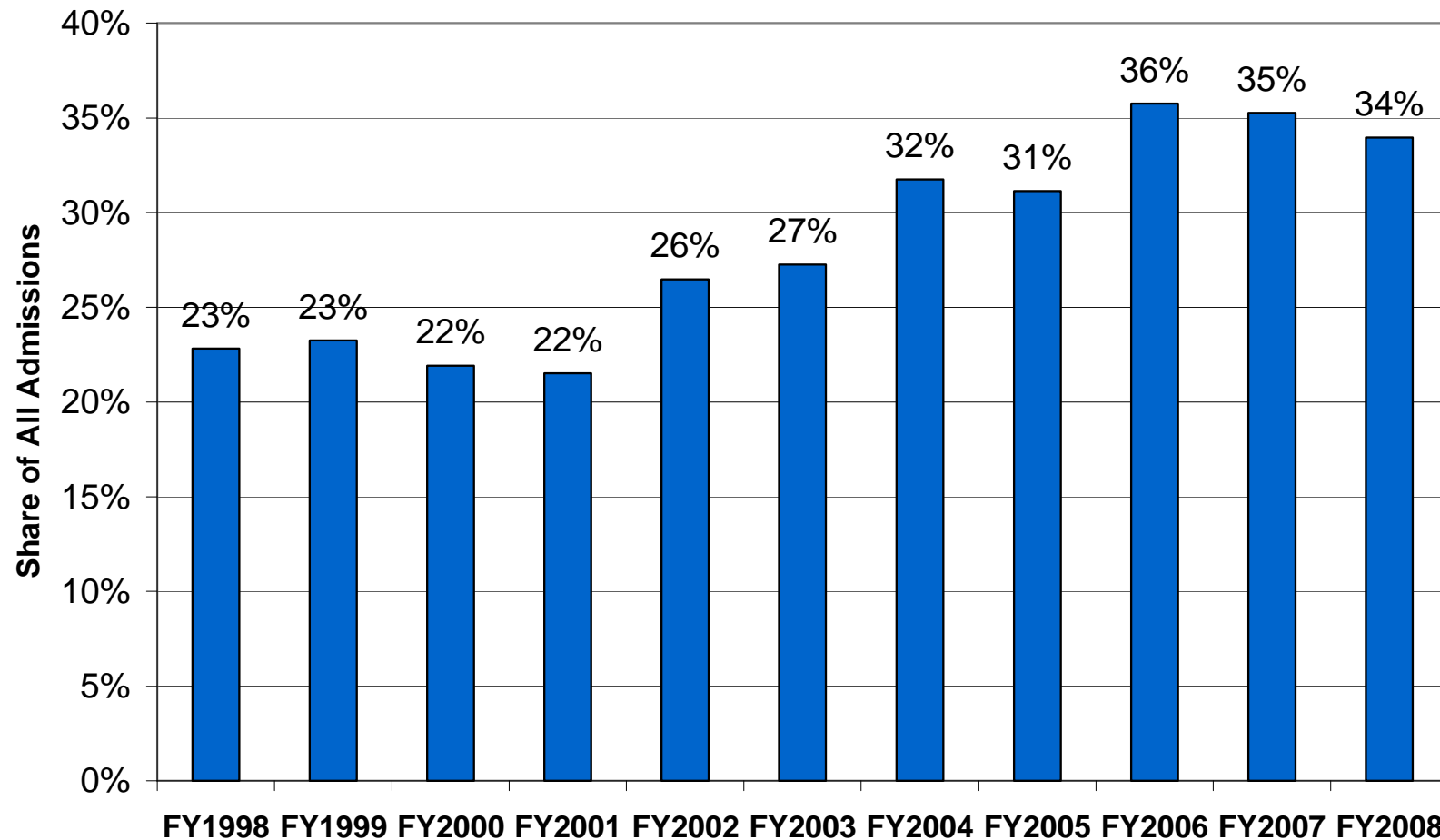
*“...to raise new ideas and improve policy debates through quality information and analysis on issues shaping New Hampshire’s future.”*

# The Need to Reform – State Prison Inmates Increasing



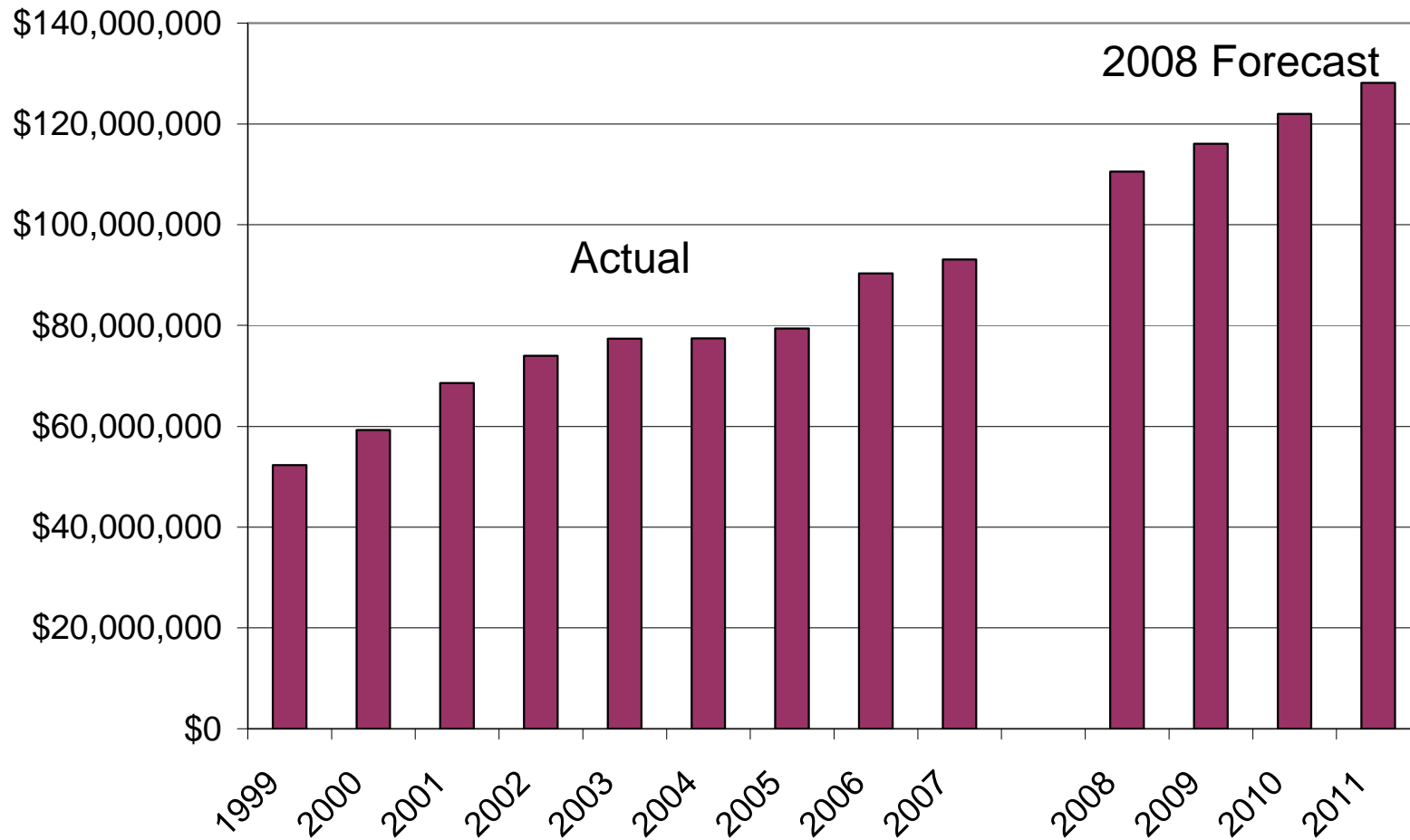
# The Need to Reform – Parole Violators Increasing

Parole Violators as % of Admissions (Current Year)



# The Need to Reform – Corrections Spending Soaring

Actual and Projected State Prison System Expenditures



# Corrections in New Hampshire After SB500

- What were the goals of SB500?
- What were the changes made to SB500 in SB52?
- Evidence of “cost shifting” due to reform?
- Changes to the inmate population, overall prison costs, and the state crime rate, etc.

## Goals of Justice Reinvestment

- Reduce Inmate Population and Spending on Corrections
- Reinvest savings in treatment and sanction programs
- Increase public safety by reducing recidivism.
- Findings presented in January 2010, leading to SB500 legislation.

# Goals of SB500

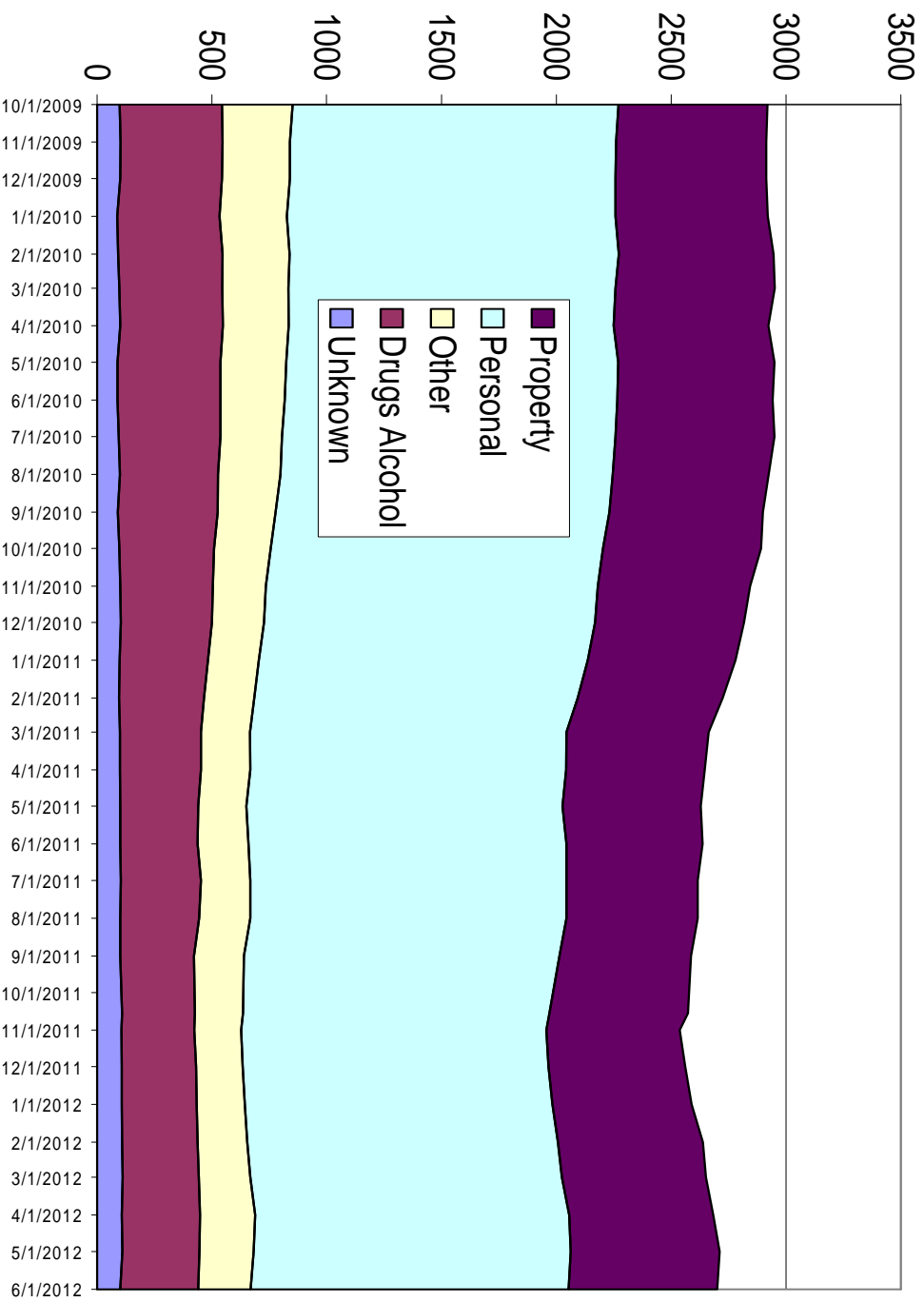
- Focus community-based supervision resources on high-risk offenders.
- Use short, swift and certain sanctions, including jail time, to reduce crime and revocation rates among people sentenced to felony probation.
- Establish an intermediate sanction program and a designated parole revocation facility to respond more effectively to parole violations.
- Ensure that high-risk probationers and parolees with serious addiction and/or mental health disorders are monitored with rapid drug tests and have access to treatment programs.
- Ensure everyone leaving prison receives at least nine months of post-release, community-based supervision.
- Reinforce truth-in-sentencing by requiring nonviolent, property, and drug offenders to serve 100 to 120 percent of their minimum sentence.

Source: NH Department of Corrections, June 2010



# SB500 Corrections Reform Lowered Number of Inmates

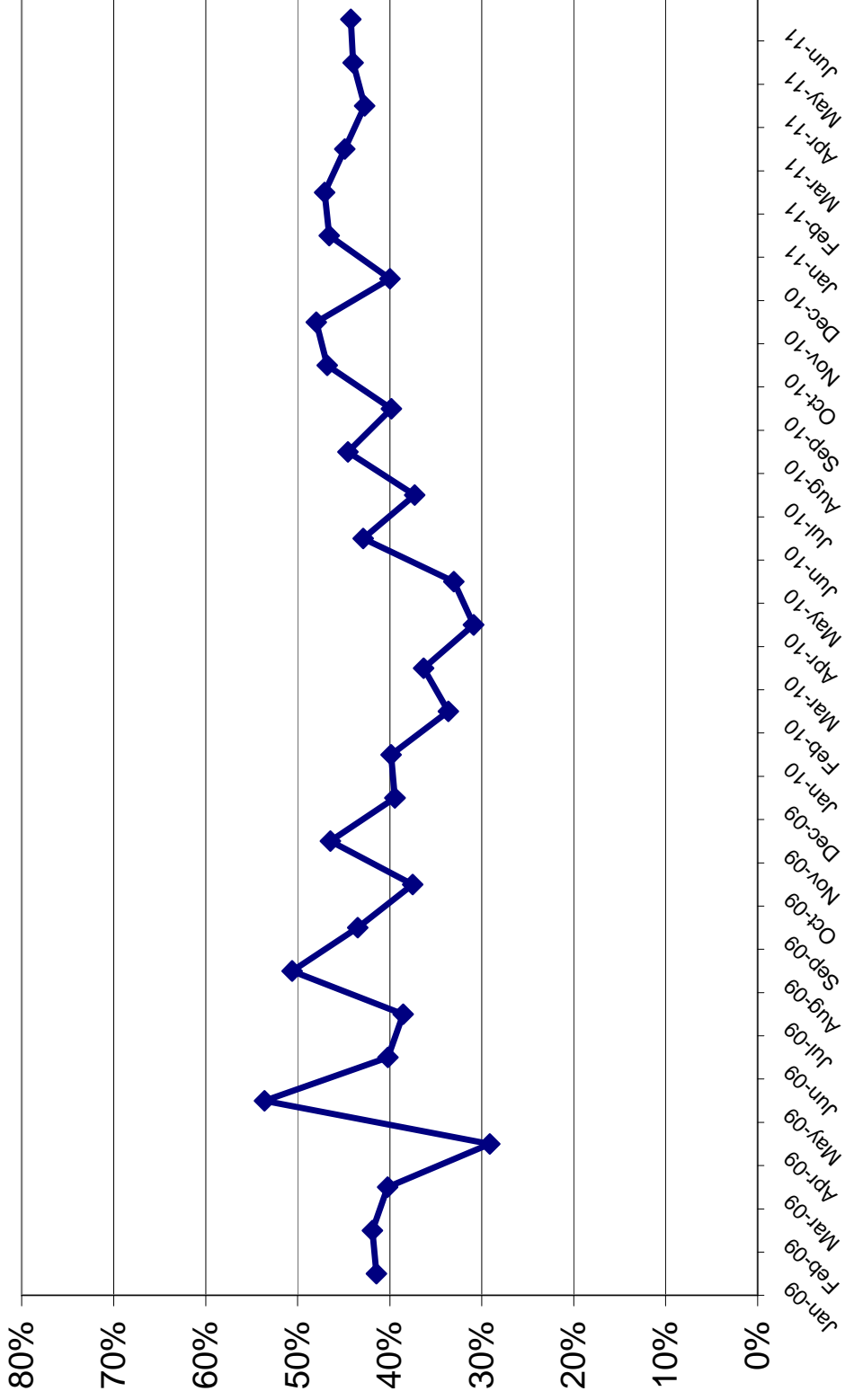
NH State Prison Population by Major Offense





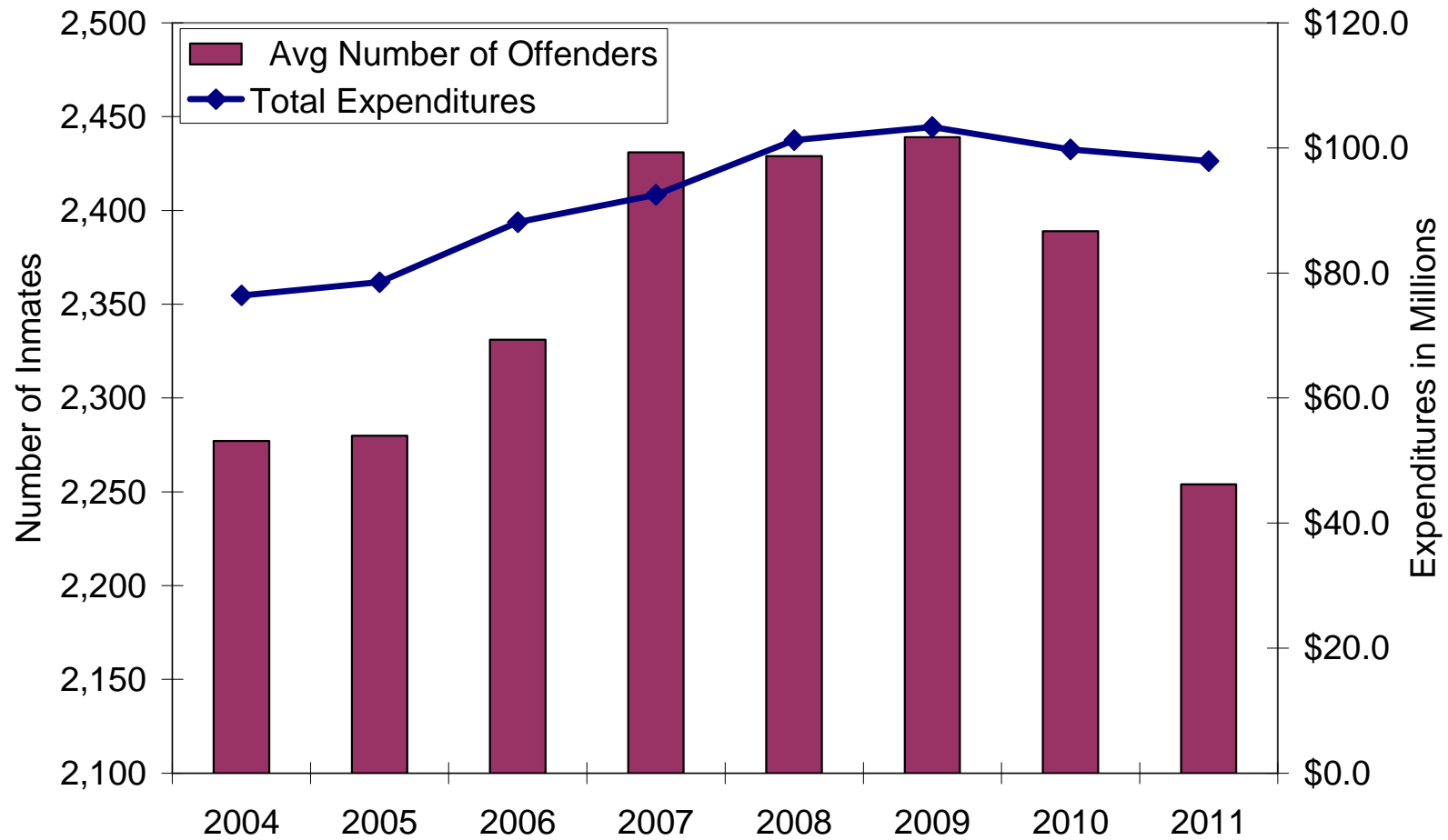
# Parole Revocations Did Not Increase Under SB500

Parole Revocations as Percent of Prison Admissions

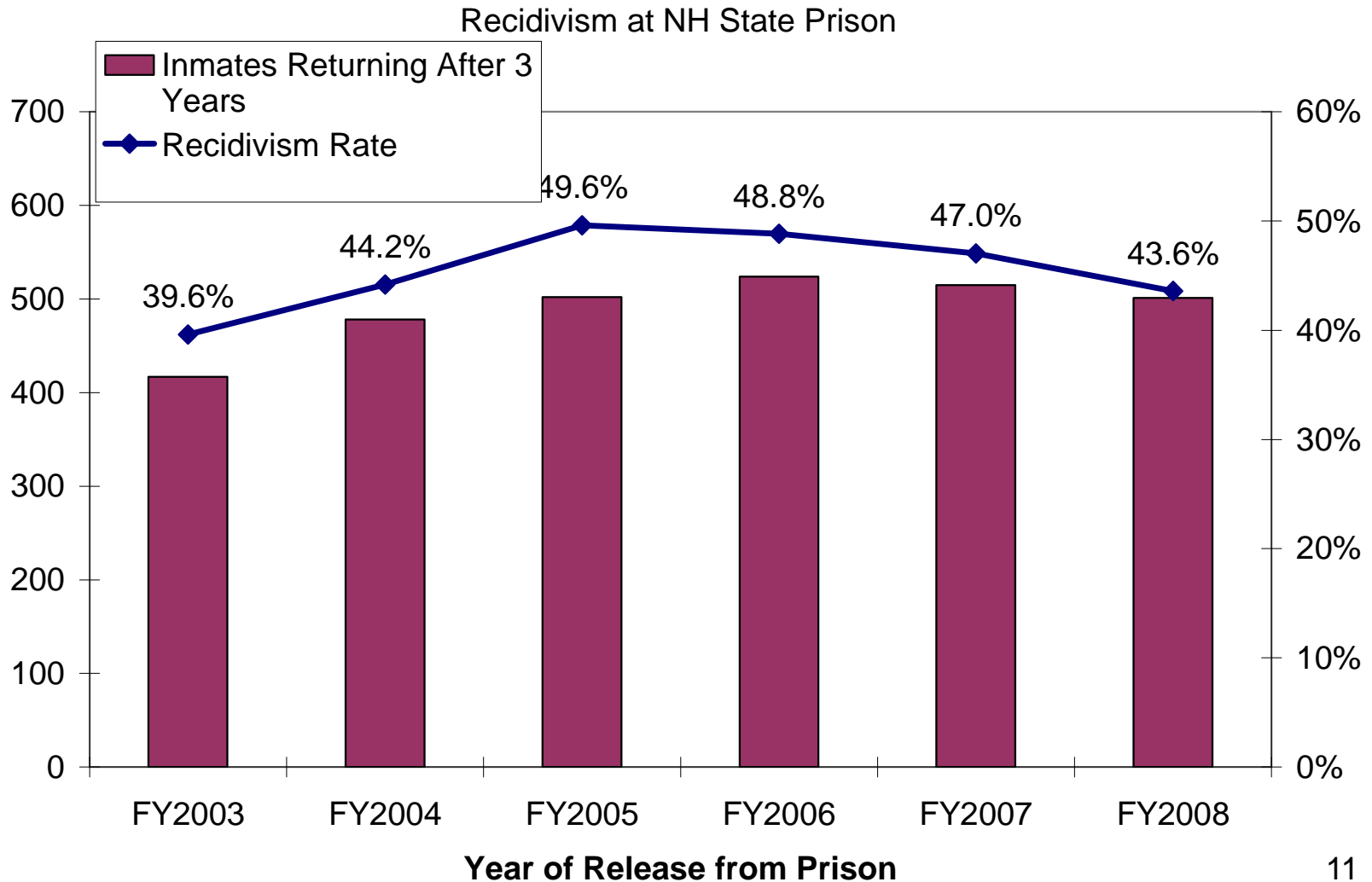


# Fewer Inmates Did Bend the Corrections Cost Curve

New Hampshire State Prison Inmates and Total Expenditures



# Recidivism Rates Have Been Declining



# Crime Did Not Increase Under Justice Reinvestment Reform

<b>New Hampshire Offense Summary - State Totals</b>	<b><u>2008</u></b>	<b><u>2009</u></b>	<b><u>2010</u></b>	<b><u>2011</u></b>	<b><u>2012</u></b>	<b><u>2013</u></b>
Violent Offenses	19,276	19,372	20,026	18,786	18,154	17,407
Property Offenses	46,776	47,087	47,643	47,142	47,349	44,655
Drug Offenses	5,609	6,254	6,566	6,304	6,322	6,689
Public Order Offenses (not incl DUI, liquor law, etc.)	638	675	656	642	683	750
<b>All Offenses Total</b>	<b>72,299</b>	<b>73,388</b>	<b>74,891</b>	<b>72,874</b>	<b>72,508</b>	<b>69,501</b>

## **New Hampshire Arrests - State Department of Safety Arrest Reports**

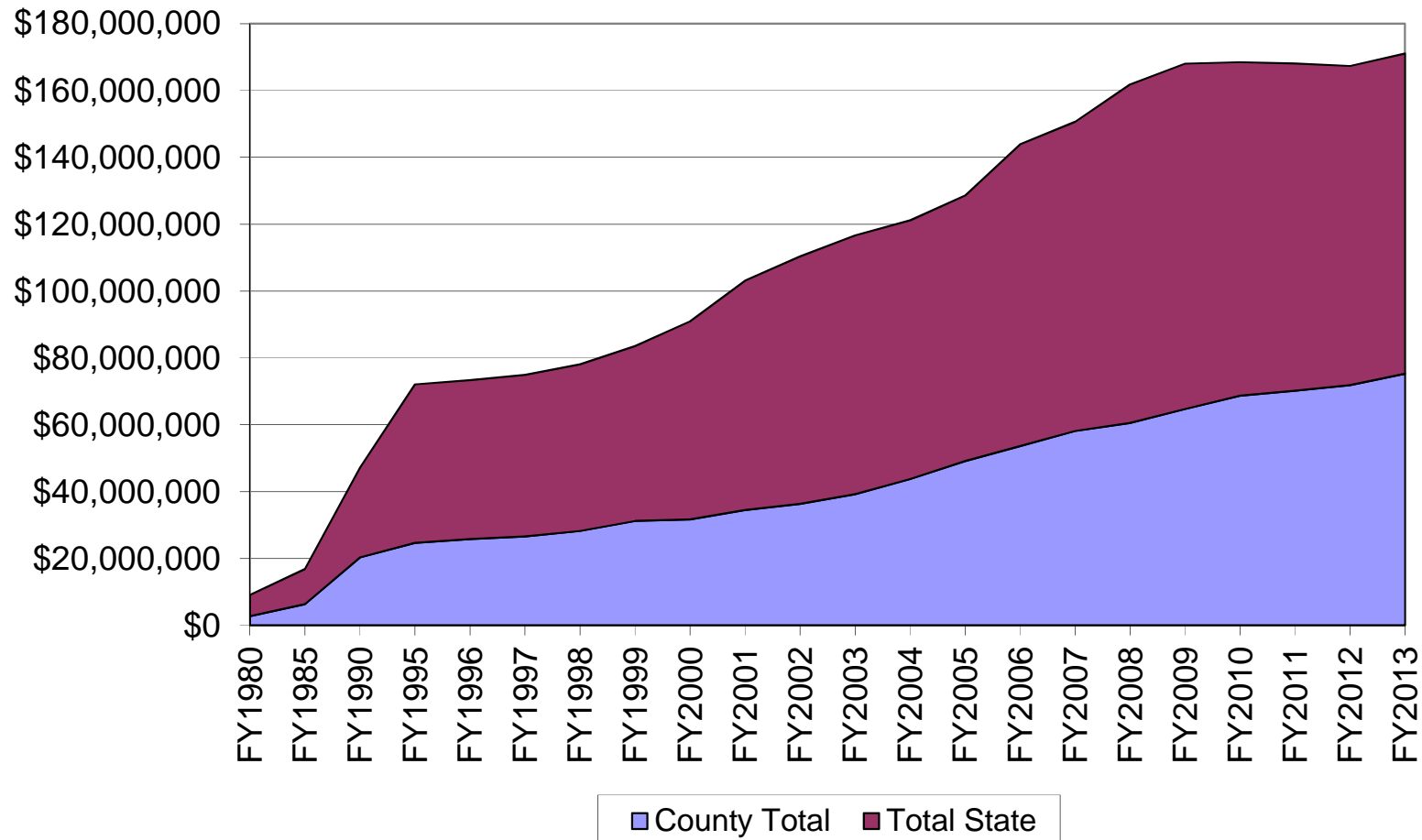
<b><i>Includes Manchester</i></b>	<b><i>2008</i></b>	<b><i>2009</i></b>	<b><i>2010</i></b>	<b><i>2011</i></b>	<b><i>2012</i></b>	<b><i>2013</i></b>
Violent Offenses	7,308	7,491	7,596	7,241	7,089	6,652
Property Offenses	6,536	7,012	6,902	7,410	7,664	8,385
Drug Offenses	3,664	4,227	4,096	4,194	4,169	4,424
Public Order Offenses	17,991	17,793	15,936	15,630	15,253	13,800
Drunkenness, DUI, Liquor Violations	14,364	14,136	12,410	12,296	11,890	10,622
All Other Public Order Offenses	3,627	3,657	3,526	3,334	3,363	3,178
All Other Offenses	12,800	12,960	12,579	12,650	12,250	12,109
<b>All Arrests Total</b>	<b>48,299</b>	<b>49,483</b>	<b>47,109</b>	<b>47,125</b>	<b>46,425</b>	<b>45,370</b>

# Local Police Expenditures Unaffected by Reform

	<b>Spending per Resident for Municipal Police (2013 dollars)</b>		
<u>Year</u>	<u>NH Cities</u>	<u>NH Towns</u>	<u>Total NH</u>
2001	\$216.67	\$152.05	\$173.10
2002	\$221.93	\$159.71	\$179.84
2003	\$231.18	\$166.67	\$187.41
2004	\$239.04	\$170.63	\$192.50
2005	\$241.21	\$175.73	\$196.53
2006	\$237.59	\$177.81	\$196.70
2007	\$240.10	\$183.62	\$201.40
2008	\$238.78	\$183.69	\$201.05
2009	\$234.59	\$188.00	\$202.67
2010	\$238.22	\$184.65	\$201.12
2011	\$237.25	\$183.18	\$199.81
2012	\$239.23	\$183.11	\$200.35
2013	\$258.17	\$190.93	\$211.58
<b>Source: MS2 forms, Line A4210</b>			

# County Jail Expenditures Up Moderately

Corrections Expenditures in New Hampshire



# 2011 Public Reaction to SB500

- Violent offenders and sexual offenders were released to parole (and community supervision) nine months before the expiration of their sentence.
- SB52 was enacted over public concern that SB500 limited the ‘discretion’ of the adult parole board, and the “high profile” release of violent offenders.

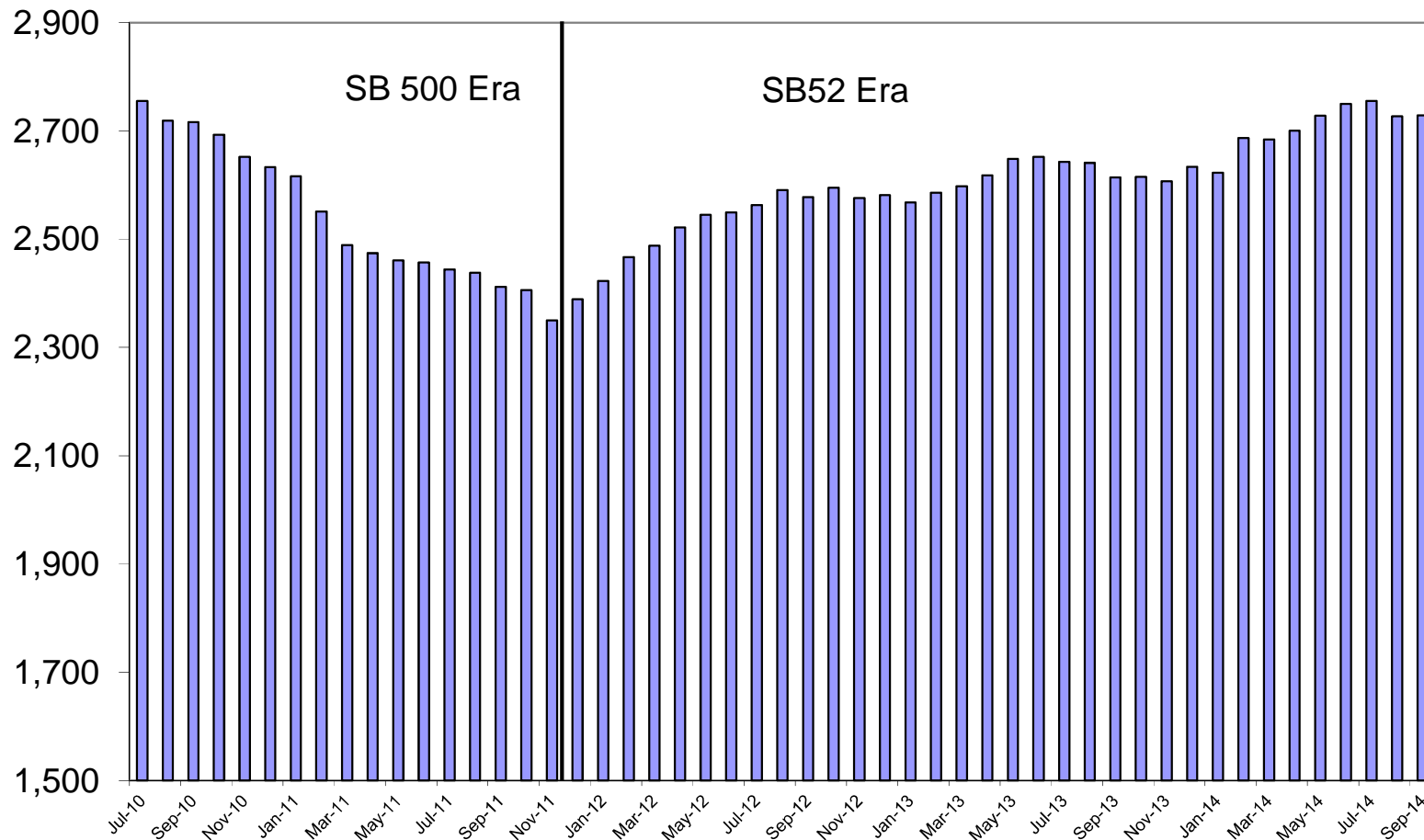
# Goals of SB52

- Excludes a prisoner convicted of a violent crime or a sexually violent offense from mandatory supervised release if the parole board votes to do so.
- Provides the parole board **with greater discretion** to recommit a person who reoffends while on mandatory supervised release.
- Requires that an offender placed on probation or parole for conviction of a felony offense that would require registration as a sexual offender or an offender against children shall not be placed on administrative supervision.



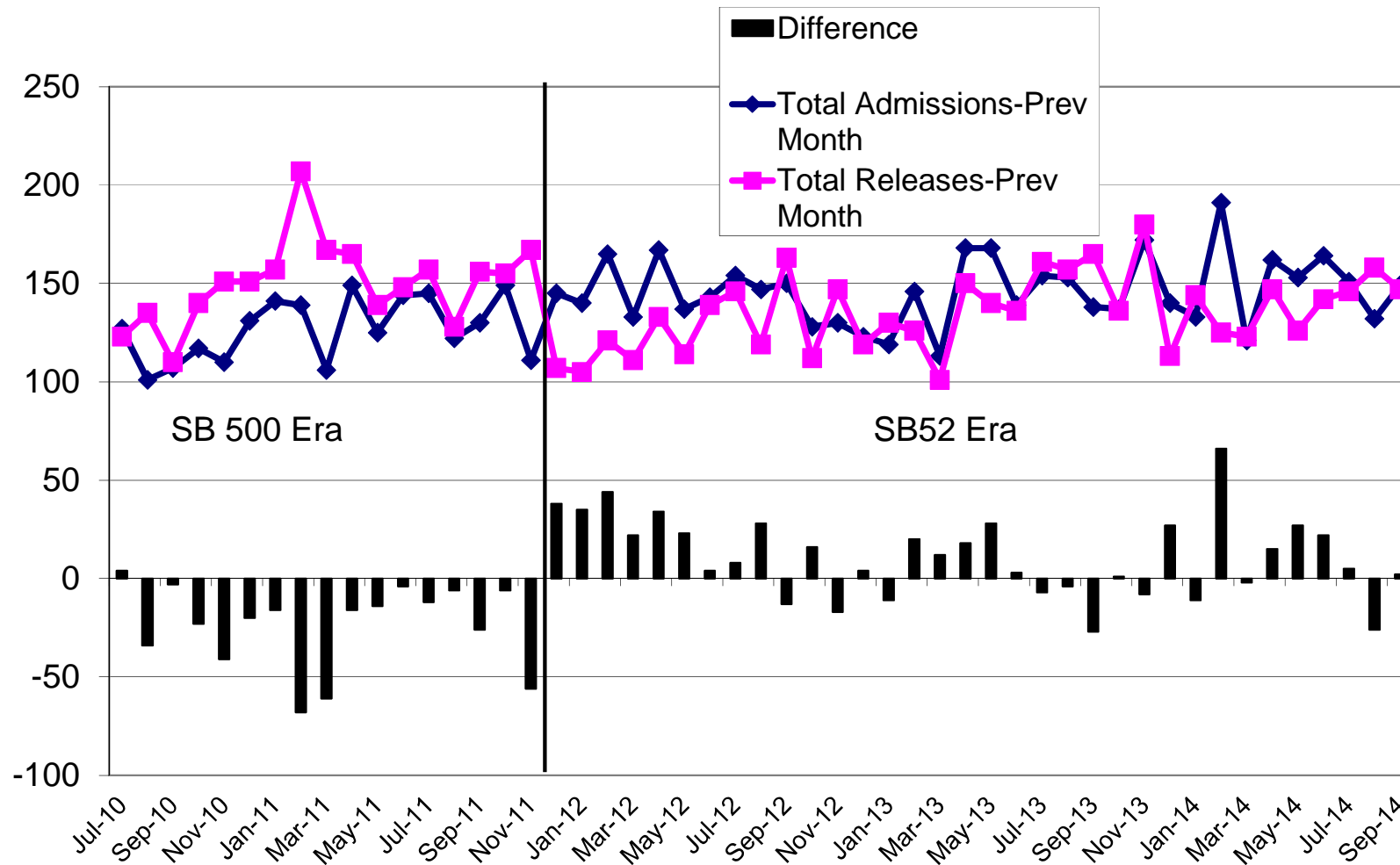
# SB52 Changes Have Reversed the Trend (Prison Population Rising Again)

New Hampshire State Prison Population

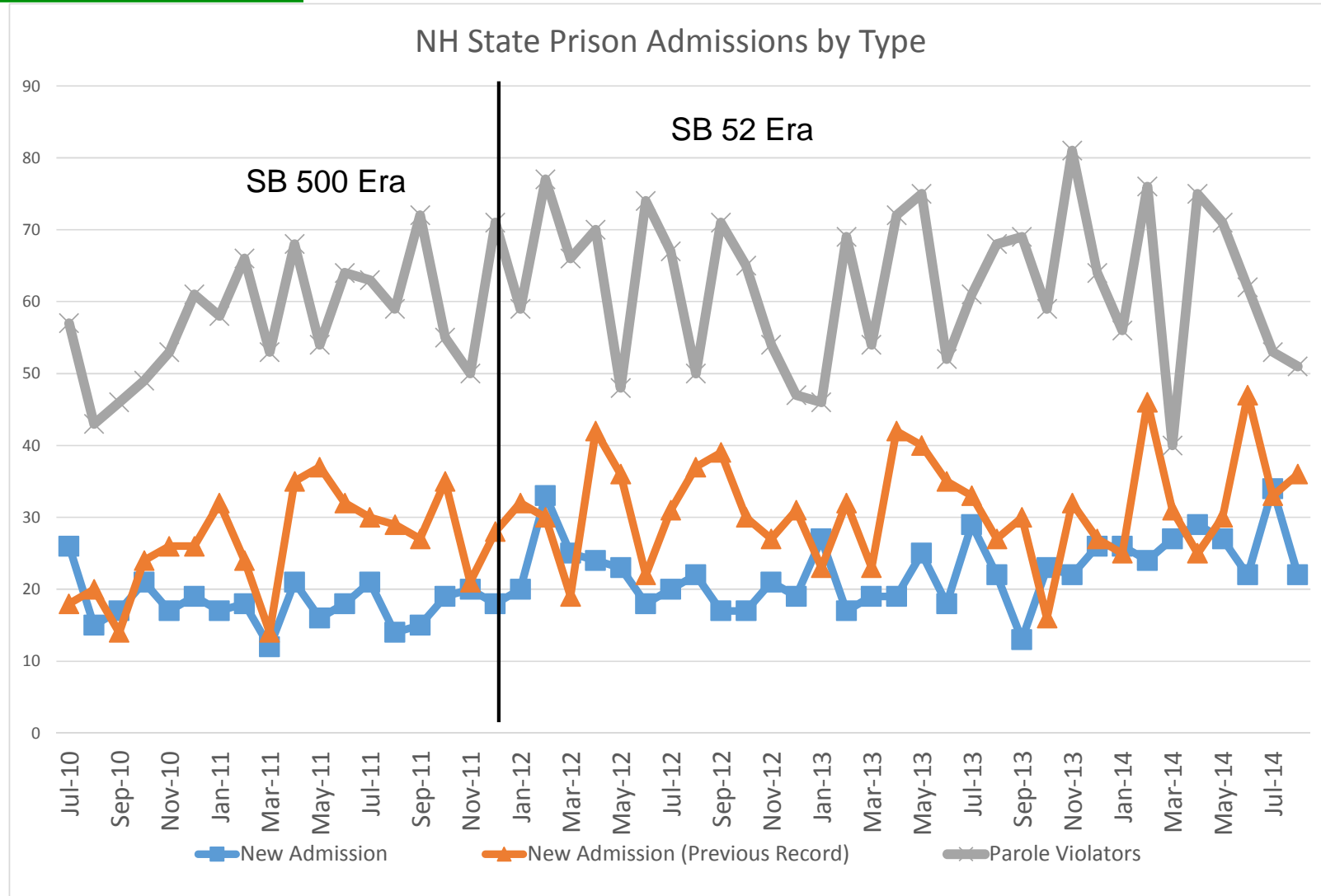


# Releases Below Admissions Since 2011

NH State Prison Admissions and Releases - Post Reform

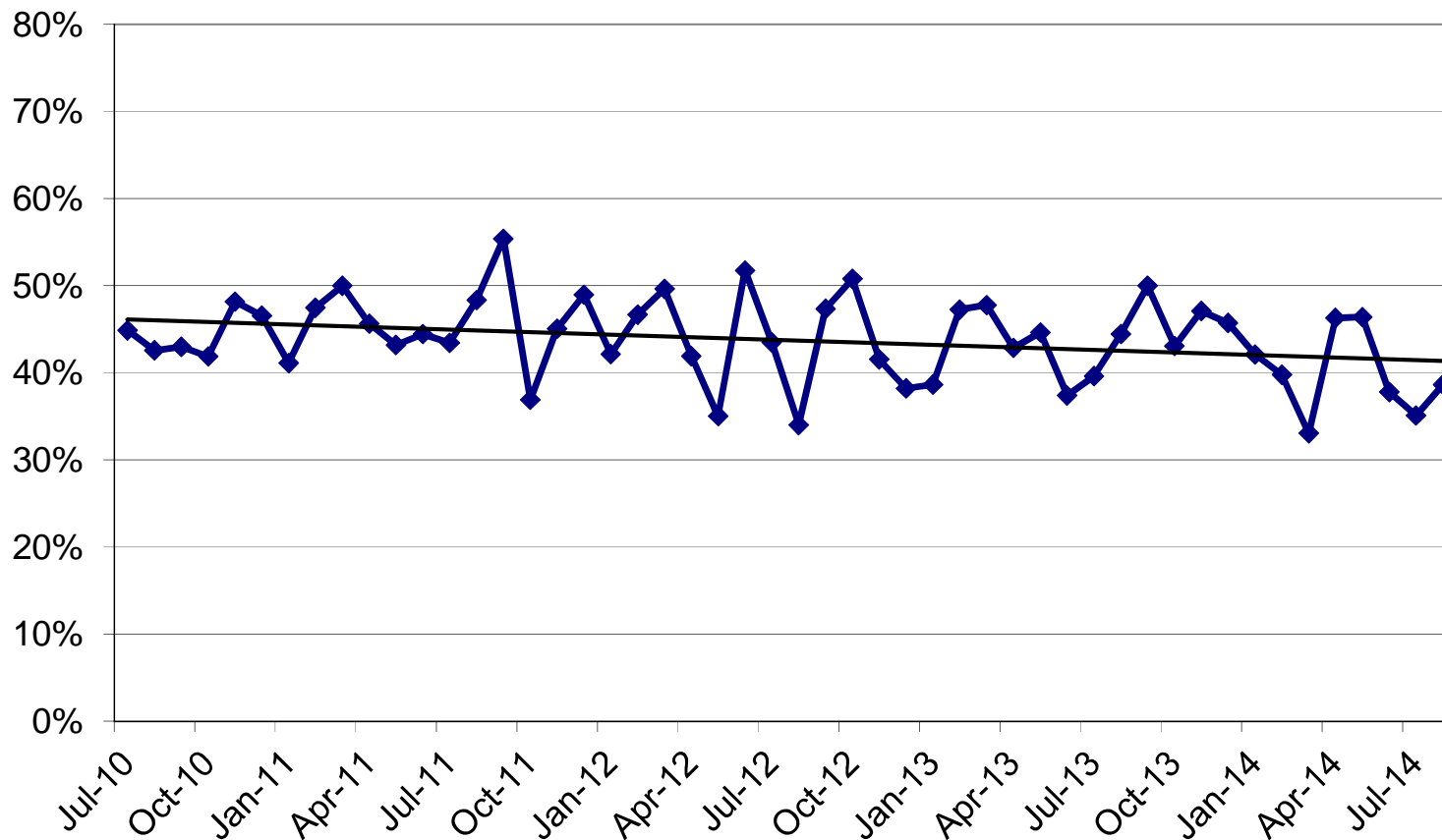


# New Admissions Increase



# Parole Violations as Share of Admissions Decline

Parole Violators Portion of Admissions



# Summary

- The Justice Reinvestment Act can be considered a success, as the evidence suggests that the state was able to reduce the state prison population in 2011, as well as hold state prison expenditures constant for two years.
- More importantly, the evidence suggests that the safety of the New Hampshire population was not compromised in this time period and that municipal and county safety and correction costs did not increase as a result of the reforms of SB500.

# Other Factors

- How many inmates are kept in longer than 120% of minimum or after 9 months to maximum?
- How many parolees are revoked, and for what reason?
- How much of the increase is because of parole board decisions?
- How much of the increase is due to unavailability of required programs or lack of housing?

# Looking Ahead

- Additional corrections reforms have been introduced in New Hampshire in recent years, with the dual goals of improving public safety while lowering overall corrections costs.
  - **Community corrections** programs for nonviolent offenders.
  - **Diversion programs** intervene before a non-violent, first-time offender goes to trial.
  - **Problem-solving courts** designed to address social issues, such as drug abuse and mental illness, which are often the underlying problems of criminal behavior.



# New Hampshire Center for Public Policy Studies

## Board of Directors

William H. Dunlap, Chair

David Alukonis

Eric Herr

Dianne Mercier

James Putnam

Todd I. Selig

Michael Whitney

Daniel Wolf

Martin L. Gross, *Chair  
Emeritus*

### *Directors Emeritus*

Sheila T. Francoeur

Stuart V. Smith, Jr.

Donna Sytek

Brian F. Walsh

Kimon S. Zachos

## Want to learn more?

- **Online: [nhpolicy.org](http://nhpolicy.org)**
- **Facebook: [facebook.com/nhpolicy](https://facebook.com/nhpolicy)**
- **Twitter: [@nhpublicpolicy](https://twitter.com/nhpublicpolicy)**
- **Our blog: [policyblognh.org](http://policyblognh.org)**
- **(603) 226-2500**

*“...to raise new ideas and improve policy debates through quality information and analysis on issues shaping New Hampshire’s future.”*